

AHEAD

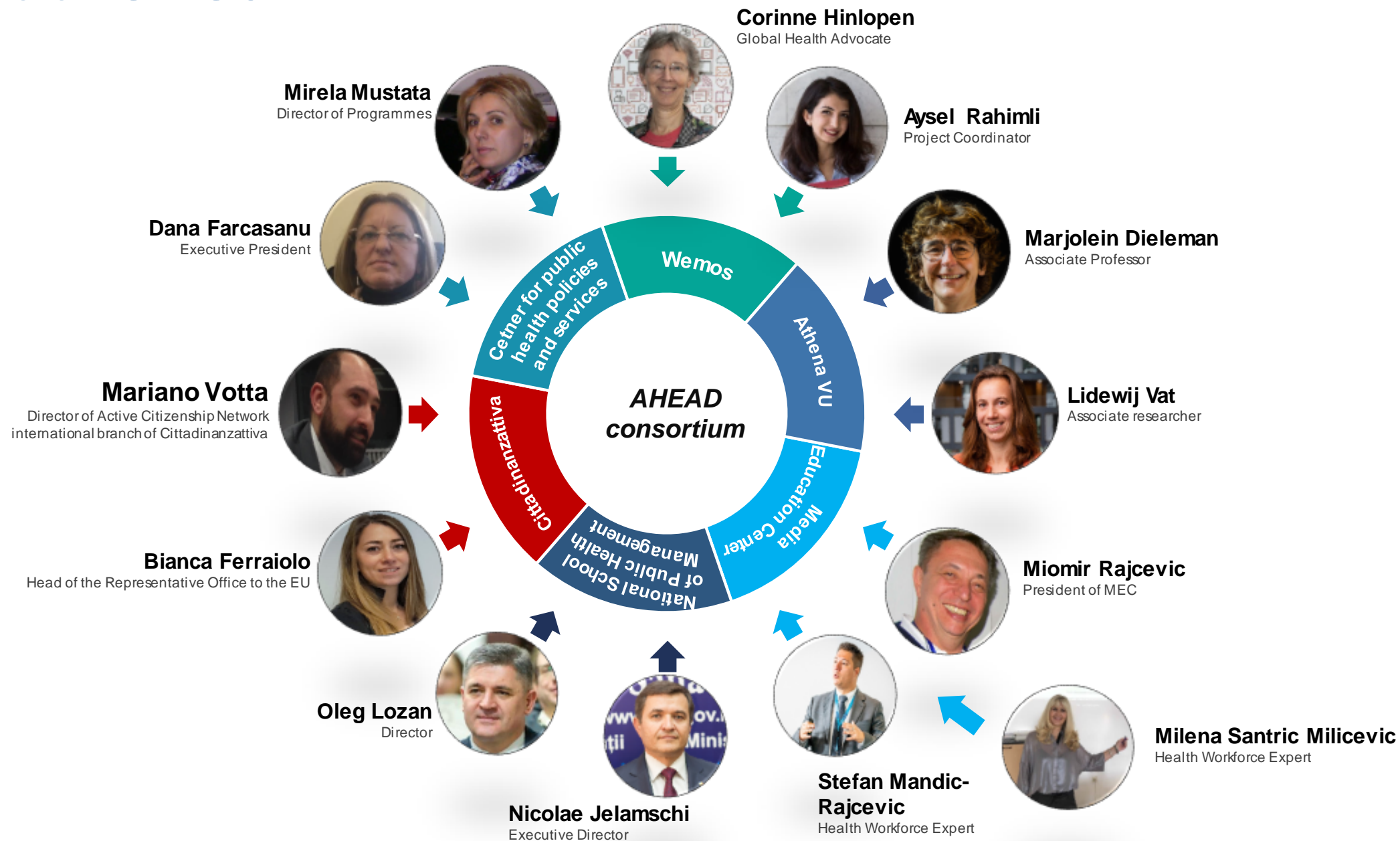


**ACTION FOR HEALTH AND EQUITY
ADDRESSING MEDICAL DESERTS**

wemos
HEALTH UNLIMITED



Meet the Team



Countries



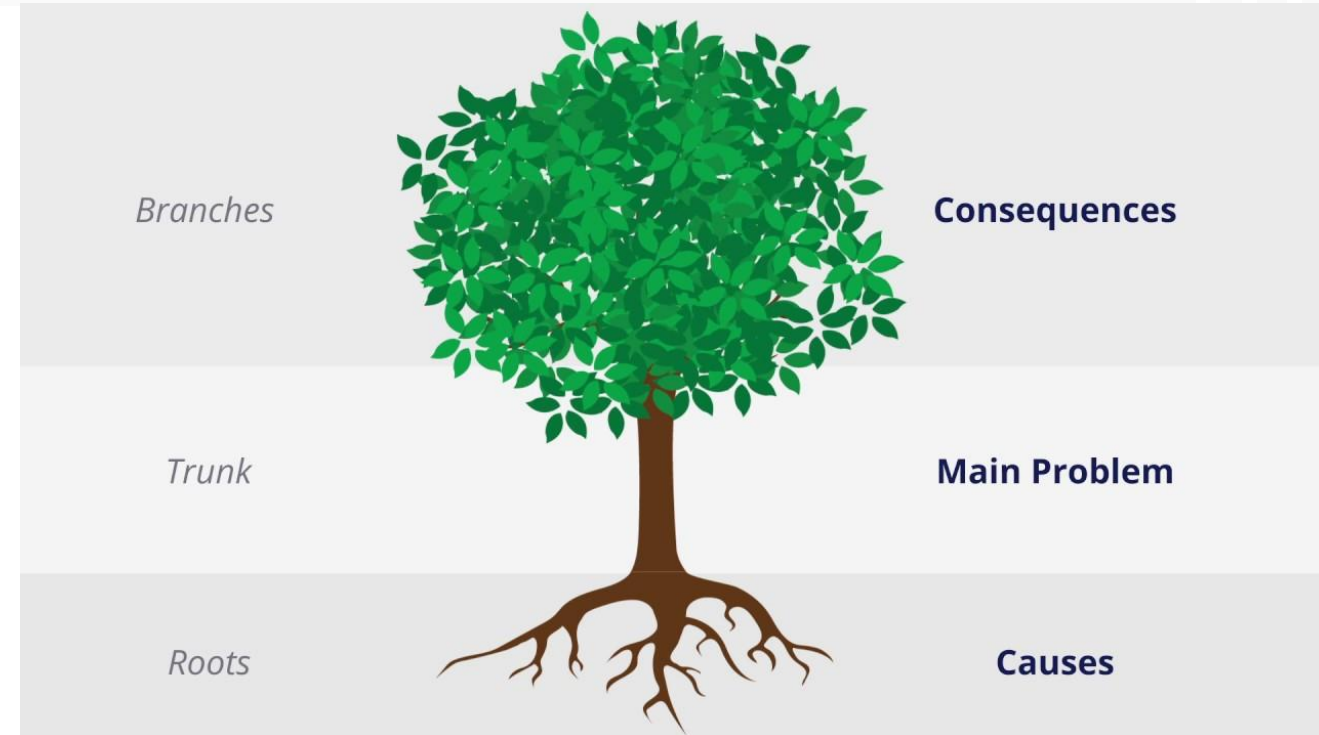
Problem Tree

Working definition (in Call for Proposals):

‘isolated or depopulated areas and
urban and rural areas
with a low concentration of services’

In Health Workforce context:

‘falling number of medical practitioners;
inadequate composition of healthcare
professionals’ teams; little or no access to digital
technologies’



Towards a new definition and taxonomy:

Nature

Effects

Magnitude

Affected populations & their 'lived realities'

Root causes

The way AHEAD

*Pathway to change – the **HOW***

- Understand existing concepts of health, well-being and care, in their specific social, cultural and political context, at local as well as national level
- Analyse (in)effectiveness of previous efforts & reasons
- Develop feasible, context-specific, multi-level interventions, with ‘ownership’
- Engaging multiple stakeholders



By applying a participatory, inclusive approach

Specific objectives

1. Generate evidence and build stakeholder knowledge on medical deserts and related policies in the project countries
 - **WP4:** Generate evidence
2. Develop and build consensus on context-specific, feasible policy measures to support policy makers to counteract and prevent medical deserts
 - **WP5:** Consensus Building Sessions
3. Ensure joint reflection on effective, feasible and acceptable policy measures to prevent and counteract medical deserts, among national and European key stakeholders and relevant decision makers
 - **WP6:** Policy Dialogues



Deliverables

1. Policy briefs & other knowledge products, including a proposal for a new definition and taxonomy of 'medical desert'
2. A tested and replicable model for participatory public health policymaking
3. An interactive diagnostic monitoring tool
4. A Medical Deserts Network

AHEAD



ACTION FOR HEALTH AND EQUITY
ADDRESSING MEDICAL DESERTS

More information:

- <https://ahead.health>
- Subscribe to our newsletter!

Questions, observations, suggestions?

- Corinne.Hinlopen@wemos.nl
- Aysel.Rahimli@wemos.nl

